

- ⇒ If your condition does not improve or gets worse, please contact the surgery during opening hours on 01948 860205.
- ⇒ If you require information or advice which is non-urgent, you can telephone NHS Direct, a 24 hour advice line, on 0845 46 47.
- ⇒ **OUT-OF-HOURS COVER:** Medical advice is always available for emergencies at night, weekends and all bank holidays. If you require advice urgently, please call 01948 860205. The recorded message will give you the number to call for the GP Out of Hours Service.
- ⇒ **EMERGENCIES:** In the event of a serious problem, such as chest pain or collapse, call 999 immediately.

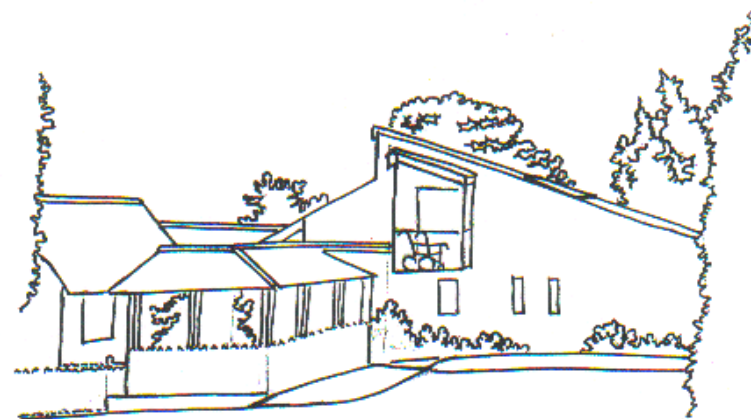


Laurel Bank Surgery
Malpas
Cheshire SY14 8PS



Phone: 01948 860205
Fax: 01948 860142

**AFTER-CARE ADVICE ON
INSECT BITE & STINGS
LAUREL BANK SURGERY
MALPAS, CHESHIRE SY14 8PS**



Tel: 01948 860205

Fax: 01948 860142



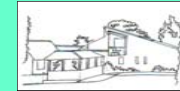
Bites

Insect bites in this country are rarely more than an inconvenience.

They cause local reactions where histamine rushes to the site of the bite and causes redness, swelling and heat. This can continue to get worse for up to 48 hours.

The treatment is to take oral antihistamines and apply hydrocortisone 1% cream to the affected area.

If after 48 hours the pain and redness continues to spread, you should seek medical advice.



Stings

Stings may not be any worse than an insect bite and treated in the same way. If you have access immediately after the sting, putting bicarbonate of soda on a bee sting or vinegar on a wasp sting can help, followed by antihistamines and hydrocortisone cream 1%.

The swelling from a sting will always travel with gravity, down the arm or leg, and may be worse than a bite. The swelling from stings can continue to spread downwards for 3 to 4 days but if you see any discharge or redness spreading upwards you should see a doctor as it may be infected.



You can occasionally get a severe anaphylactic reaction where the whole body reacts. **THIS IS AN EMERGENCY AND YOU NEED TO DIAL 999.**

If you have had one of these reactions, you may require an adrenaline injection pen to keep at home.