

- ⇒ If your condition does not improve or gets worse, please contact the surgery during opening hours on 01948 860205.
- ⇒ If you require information or advice which is non-urgent, you can telephone NHS Direct, a 24 hour advice line, on 0845 46 47.
- ⇒ **OUT-OF-HOURS COVER:** Medical advice is always available for emergencies at night, weekends and all bank holidays. If you require advice urgently, please call 01948 860205. The recorded message will give you the number to call for the GP Out of Hours Service.
- ⇒ **EMERGENCIES:** In the event of a serious problem, such as chest pain or collapse, call 999 immediately.

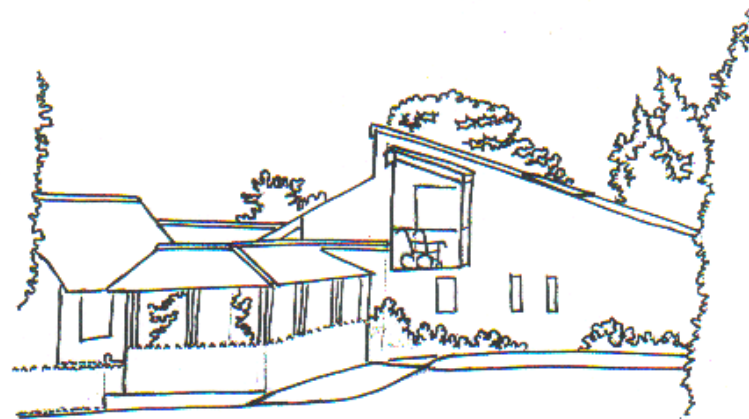


Laurel Bank Surgery
Malpas
Cheshire SY14 8PS



Phone: 01948 860205
Fax: 01948 860142

**AFTER-CARE ADVICE ON
CHILD HEAD INJURY
LAUREL BANK SURGERY
MALPAS, CHESHIRE SY14 8PS**



Tel: 01948 860205

Fax: 01948 860142



Advice to Parents/Guardians

The following guidelines are to help you care for your child at home and determine whether they need to be seen again by either your own GP or in any Accident and Emergency Department.

- ◆ Observe for changes in the child's level of consciousness. Let them sleep, but check that they are rousable and will stir when disturbed
- ◆ Observe for symptoms of severe headache, which are high-pitched crying, agitation and clutching of head. Headaches are common, so give them regular Paracetamol syrup e.g. Calpol or Disprol. Do not give Aspirin.
- ◆ Give them **fluids only** for a few hours, then return to their normal diet. Vomiting is common after even the mildest head injury. However, forceful or persistent vomiting is not.



Following Their Child's Head Injury

Contact, or return to the Accident and Emergency Department, if any of the following occur:

- ⇒ Fitting
- ⇒ Difficulty in rousing child
- ⇒ Persistent vomiting
- ⇒ Unequal pupils
- ⇒ Weakness or loss of use of arms or legs
- ⇒ Slurred speech
- ⇒ Blurred vision
- ⇒ Severe headache

