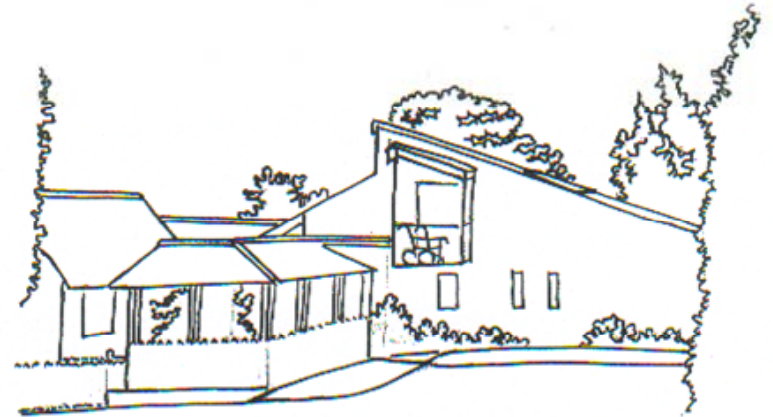




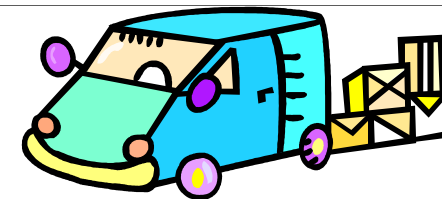
## DISPENSARY OPENING TIMES

	Morning	Afternoon
Monday	8:30 – 1:00	3:00 – 6:00
Tuesday	8:30 – 1:00	3:00 – 6:00
Wednesday	8:30 – 1:00	<b>Closed</b>
Thursday	8:30 – 1:00	3:00 – 6:00
Friday	8:30 – 1:00	3:00 – 6:00

**DISPENSARY  
DELIVERY SERVICE**  
LAUREL BANK SURGERY  
MALPAS, CHESHIRE SY14 8PS



Laurel Bank Surgery  
Malpas  
Cheshire SY14 8PS  
Phone: 01948 860205  
Fax: 01948 860142



Tel: 01948 860205

Fax: 01948 860142



## **FREE HOME DELIVERY SERVICE FOR REPEAT PRESCRIPTIONS**

### **1. HOW DOES IT WORK?**

We will deliver to one area of the practice each week during the month so patients will get a delivery every 4 weeks.

- All prescription deliveries must be signed for.
- Tablets will not be left without a signature or with anyone under 18 years.
- If you cannot be at home to receive your order, you **MUST** make arrangements with us to leave it with a responsible adult.
- Remember to give your next month's repeat prescription order to the Driver.
- We will send you spare order forms when we confirm your first delivery date.
- The back of the prescription must be signed and the NHS Prescription Fee paid (by cheque if possible) or your Exemption Certificate shown if you have one.



If the Driver cannot deliver the medication, it will be returned to the practice. The prescription will have to be collected from the surgery.

### **2. WHO CAN USE THIS SERVICE?**

Delivery of repeat medication items is free to all our dispensing patients (that is, if you live over 1 mile from any chemist).

### **3. HOW DO I REGISTER?**

- Fill in the application form and return it to the practice. Be sure to complete the contact details so that we can reach you to confirm the first delivery date. One form is required for each patient requesting delivery.
- Check that your repeats are all ordered at the same time. If you do not already do this, please contact the Dispensers who will arrange for all your repeats to be issued on the same date.
- If your repeat prescription alters during the month, please notify the Dispensary, giving at least 2 working days notice, so that the Driver knows about the change.